

## Combining Great Technologies for Great Image Quality and Usability

### Advanced Hardware

F1.0 super large aperture  
1/1.2" advanced sensor

### Reliable Quality

The focusing performance of ultra-high definition cameras with ColorVu technology is guaranteed by the active alignment technology and superlative quality control during production.



### Pioneering Technology

Precise color rendition and image reproduction with advanced image signal processing algorithm

### Embedded Deep Learning Chip

Supports AcuSense algorithm with human/vehicle classifications

## Product Showcase

### DS-2CD2087G2-L(U)

8 MP Bullet Network Camera with ColorVu

- 0.0005 lux @ F1.0
- 2.8, 4 or 6 mm fixed lens
- Colorful imaging 24/7
- Human/vehicle classification
- H.265+/H.265
- IP67
- 130 dB WDR
- -U: build-in microphone

AcuSense  
Technology

### DS-2CD2T87G2-L

8 MP Bullet Network Camera with ColorVu

- 0.0005 lux @ F1.0
- 2.8, 4 or 6 mm fixed lens
- Colorful imaging 24/7
- Human/vehicle classification
- H.265+/H.265
- IP67
- 130 dB WDR

AcuSense  
Technology

### DS-7732NI-I4/24P

32-Channel NVR with 4 HDDs

- Up to 32 video channels
- Decoding formats: supporting H.265/H.265+/H.264/H.264+/MPEG4
- Bandwidth: 320 Mbps incoming, 256 Mbps outgoing
- 16-ch 1080p decoding
- 2 HDMI, 1 VGA and 1 CVBS output
- eSATA by default.
- 24 PoE ports
- 1.5U chassis

### DS-7732NI-I4(/16P)(B)

32-Channel NVR with 4 HDDs

- Up to 32 video channels
- Decoding formats: supporting H.265/H.265+/H.264/H.264+/MPEG4
- Bandwidth: 256 Mbps incoming, 256 Mbps outgoing
- 16-ch 1080p decoding
- 2 HDMI, 1 VGA and 1 CVBS output
- eSATA by default.
- Optional 8 PoE ports, with /8P model
- 1.5U chassis

### DS-7716NI-I4(/16P)(B)

16-Channel NVR with 4 HDDs

- Up to 16 video channels
- Decoding formats: supporting H.265/H.265+/H.264/H.264+/MPEG4
- Bandwidth: 160 Mbps incoming, 256 Mbps outgoing
- 16-ch 1080p decoding
- 2 HDMI, 1 VGA and 1 CVBS output
- eSATA by default.
- Optional 8 PoE ports, with /8P model
- 1.5U chassis

### DS-7616NI-I2(/16P)

16-Channel NVR with 2 HDDs

- Up to 16 video channels
- Decoding formats: supporting H.265/H.265+/H.264/H.264+/MPEG4
- Bandwidth: 160 Mbps incoming, 256 Mbps outgoing
- 16-ch 1080p decoding
- 1 HDMI, 1 VGA and 1 CVBS output
- Optional 8 PoE ports, with /8P model
- 1U chassis

### DS-7608NI-I2(/8P)

8-Channel NVR with 2 HDDs

- Up to 8 video channels
- Decoding formats: supporting H.265/H.265+/H.264/H.264+/MPEG4
- Bandwidth: 80 Mbps incoming, 256 Mbps outgoing
- 16-ch 1080p decoding
- 1 HDMI, 1 VGA and 1 CVBS output
- Optional 8 PoE ports, with /8P model
- 1U chassis



### Headquarters

No.555 Qianmo Road, Binjiang District,  
Hangzhou 310051, China  
T +86-571-8807-5998  
overseasbusiness@hikvision.com



# Stunning Color Images 24/7 Now Available in

# 4K

ColorVu  
Technology

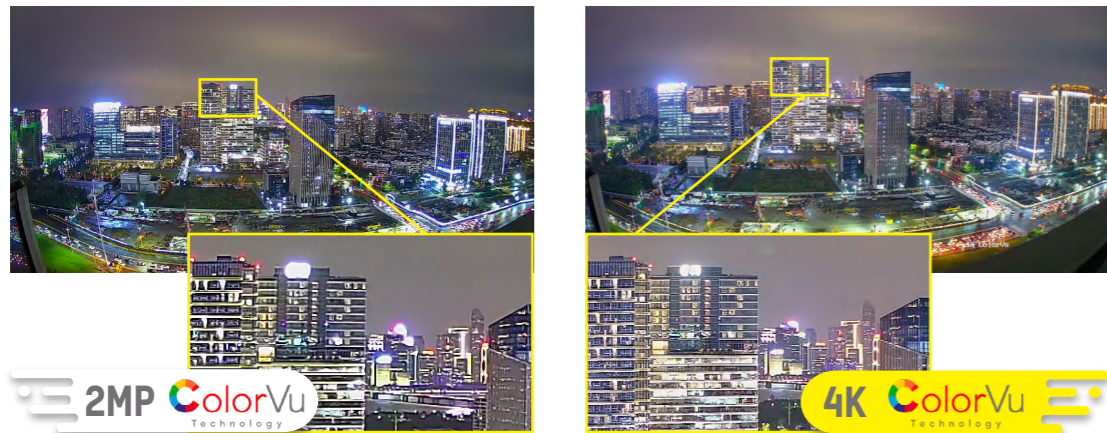
HIKVISION®

www.hikvision.com

# Even Without Supplemental Light You Will Still Enjoy

## Ultra High Definition

The 4K resolution provides great details, especially suitable for open spaces and large scenes.



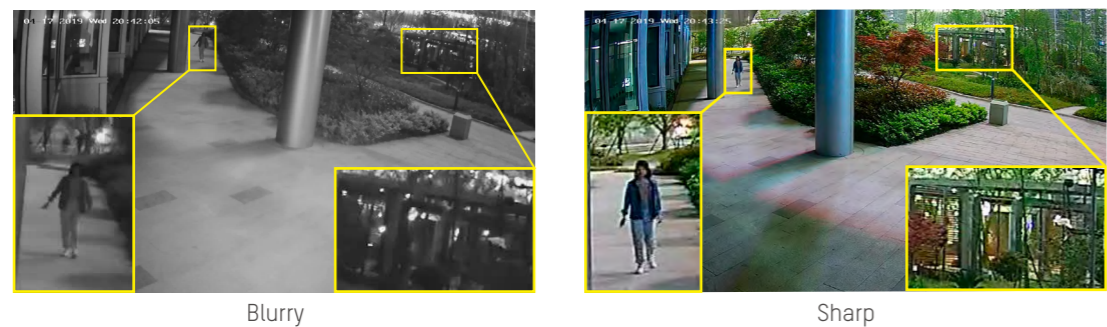
## True Color Information

- Accurate color rendering
- Excellent performance in low-light environments



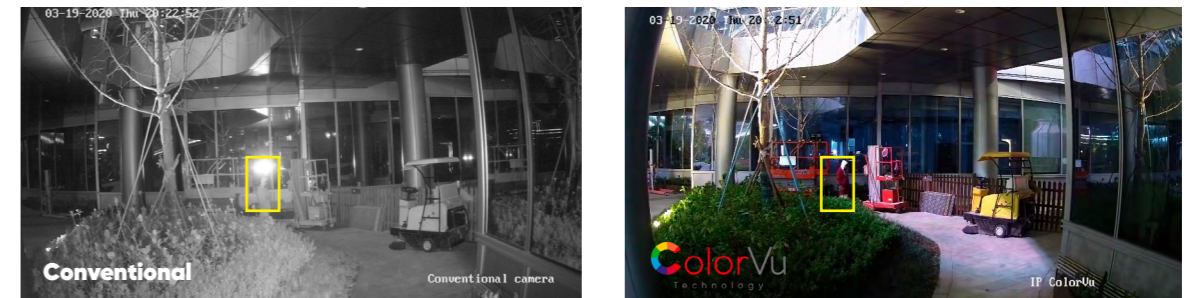
## Better Visual Experience

- Balanced brightness
- F1.0 super aperture and advanced sensor guarantee realistic rendering



# 24/7 Color Imaging with Target Classification

Cameras with ColorVu capture human and vehicle targets with vivid details, providing video coverage with more useful information.



- IR reflection on smooth surfaces may cause interferences in video
- Insufficient features on detected human targets



- Supplemental light is not needed in most scenes, reducing risk of reflections
- Human targets are captured with colorful detail, providing more information

\*Conventional images shown were shot with IR on and ColorVu images without supplemental light.



- Unable to identify license plate numbers due to IR reflection
- Unable to identify vehicle color in dark environments



- License plates are visible in color without any blur or reflection
- The color of each vehicle is clear and easy to see, even in darkness

\*Conventional images shown were shot with IR on and ColorVu images without supplemental light.